

# A Vision for Science



**MAKING A DIFFERENCE**  
at Princethorpe

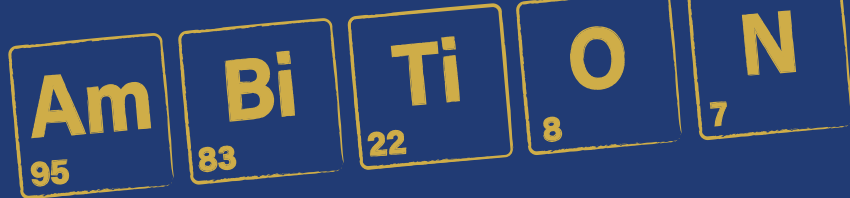
# A Vision for Science

**Our vision is simple, we want to be able to offer cutting edge, state-of-the-art science facilities which will inspire future generations of Princethorpe scientists, engineers, researchers, chemists, marine biologists and doctors.**

In a demanding world, where scientific progress is essential across the spheres of discovery, development and innovation, we need the very best teaching and learning facilities to help stimulate the intellect, ambition and creativity of our pupils. The new Science building will enable us to do just that. At just over 1600 sq metres, the two-storey building will provide contemporary, spacious and well-equipped accommodation for Biology, Chemistry and Physics.

The new building will also benefit many other curriculum areas and will allow the redevelopment and clustering of other departments, providing permanent homes for Economics, Business Studies, Geography and Classics. It will also create space for additional catering and seated dining facilities.

The main entrance of the new Science Centre will face the Lime Walk and the side of the building will abut the existing Limes building at the top of the North Lawn.



The two buildings will connect on both floors creating free-flow for pupils and staff between them. The area in front of the new building will be attractively landscaped with a central square feature.

The Foundation is committed to the new building, and plans to fund the projected build cost of £8 million pounds through a combination of managed fee income, bank borrowing and fundraising.

It is anticipated that the building will be ready for use in September 2022. A successful fundraising campaign will be a key component in bringing the project to fruition.

## Ed Hester

Headmaster

**10**  
new  
laboratories

**£8**  
million

**1,600**  
sq metres

Preparation Areas

Staff Bases

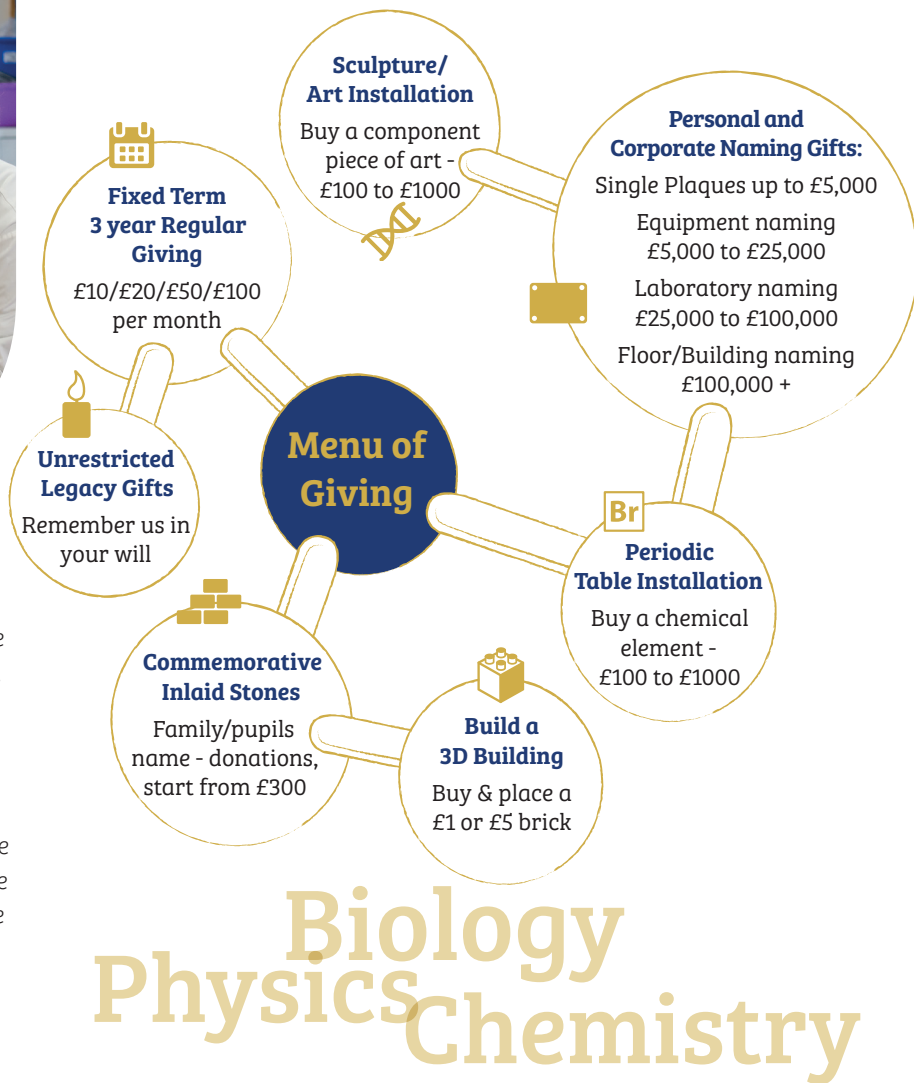
Break-Out Area  
for Private Study





## How you can Help

Our aim is for every single member of the Princethorpe community: parent, former parent, pupil, former pupil, staff, former staff, friend of the College, or prospective pupil and parent, to join together and make our *Vision for Science* a reality. We have thought carefully and consulted with members of our Princethorpe family to create an initial *Menu of Giving*, which we hope will give every individual the chance to contribute to the Science campaign. The *Menu of Giving* outlines just some of the ways in which we hope to raise funds and build for our future scientists. Giving options start at just £1!



Throughout the build we will be holding annual fundraising events, a turf cutting ceremony, Science roadshows, a Science ball and much much more. We are also very keen to hear from pupils or parents with further fundraising ideas.

In addition, we are currently creating a Campaign Board whose members have the influence, gravitas, business acumen and affinity with Princethorpe to drive forward the campaign and ensure a successful outcome.

The Board will be made up of donors who can use their networks and influence to introduce prospective supporters, secure major gifts, and develop high level corporate partnerships. If you think you may be able help in this way, please get in touch.



**Science and Technology  
are fuels for human progress.**



Professor Paul Y S Cheung, OP 1970. Hon. Professor  
in Electrical & Electronic Engineering and in  
Computer Science. The University of Hong Kong.



**What to do Next**

If you are interested in supporting our campaign in any way, please fill the form on the reverse, trim off and return to us in the pre-paid envelope and we will get in touch.



# Thank you for your interest in our Science Campaign

Please indicate below your areas of interest, return using the reply paid envelope, and someone from our campaign team will be in touch shortly.

Name:

*Preferred contact*

Contact Tel No:

Email:

Please tick as many as appropriate:

- ☐ Regular Giving (3 year fixed term)
- ☐ Commemorative inlaid stones
- ☐ Periodic table installation – Buy a chemical element
- ☐ Sculpture/Art installation – Buy a component piece of art
- ☐ Naming opportunities including:
  - Single gifts £1,000 - £5,000
  - Equipment naming gifts £5,000 - £25,000
  - Laboratory naming gifts £25,000 - £100,000
  - Floor/Building naming gifts £100,000 +
- ☐ Unrestricted legacy gifts
- ☐ Help with fundraising
- ☐ Campaign Board membership

Alternatively, email the Development Team at [makingadifference@princethorpe.co.uk](mailto:makingadifference@princethorpe.co.uk) or call 01926 634265



Use the opportunities you have, try something different, test it out, but **most of all LEARN from what you do.** What better place to do that than in a purpose built science facility at Princethorpe?

Rich Sibbick MENG. CENG. FIMECHE OP 1994.  
Sourcing Manager, PVF, Dow Silicones UK Limited.



# Your key contacts



**Rachel Hadley-Leonard**

Foundation Development  
Director and Campaign Director



**Alex Darkes**

Assistant Head  
(Development)



**Ed Hester**

Headmaster

If you would like to discuss your involvement and support in confidence, please contact

**[rachelhadleyleonard@princethorpe.co.uk](mailto:rachelhadleyleonard@princethorpe.co.uk)** or

**[alexdarkes@princethorpe.co.uk](mailto:alexdarkes@princethorpe.co.uk)** or call Rachel on 01926 634265.



The  
Princethorpe  
Foundation

[www.princethorpe.co.uk](http://www.princethorpe.co.uk)



Registered with  
**FUNDRAISING  
REGULATOR**

Registered office Princethorpe College Rugby CV23 9PX. Company registered in England & Wales and Limited by Guarantee Number 4177718. Registered Charity Number 1087124.